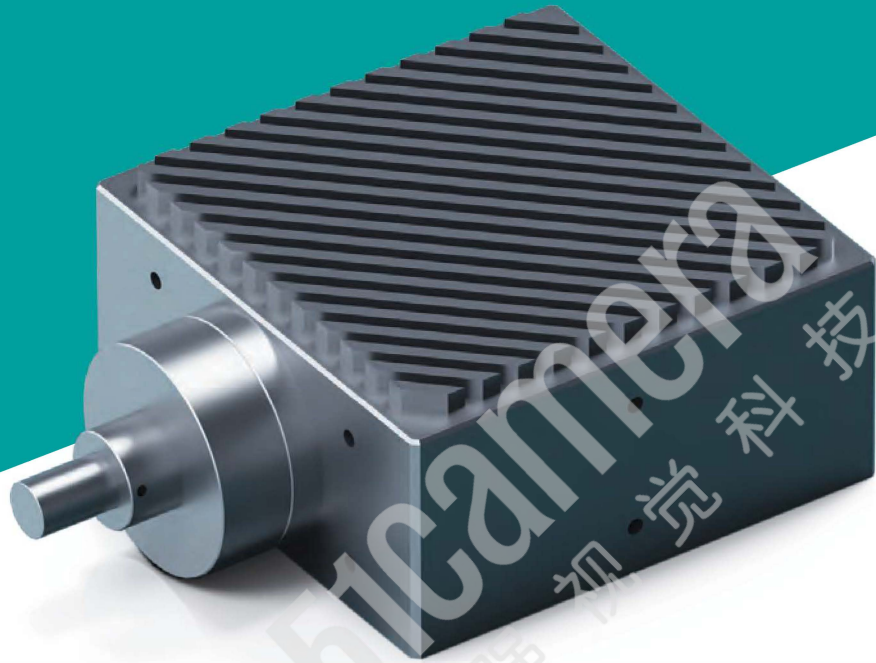


icore

ILS-RGB20A-COA

Innovation to the Core



iLight

RGB Spot Light Coaxial

Features

- Light source for coaxial illuminating
- Light source for high magnification
- Light source for spot illuminating
- Light source for telecentric & objective lens
- Saving space and energy
- Best match for iPulse

Application

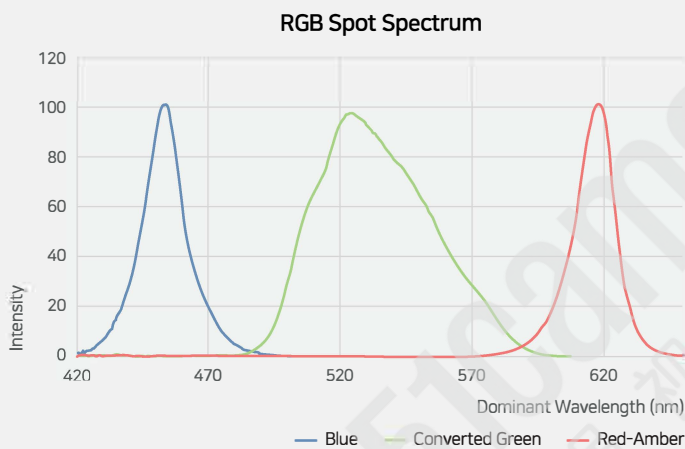
- FPD Inspection
- Film Inspection
- Wafer Inspection
- PCB Inspection
- Glass inspection

iLight RGB Spot Light

Specification

	Wavelength	Current (Continuous/Pulse)	Controller
Red	613nm	4A / 40A(@20μs), 20A(@100μs)	IP-4P4S-3C IP-4P4S-50A
Green	555nm	5A / 50A(@20μs), 40A(@100μs)	
Blue	455nm	5A / 50A(@20μs), 40A(@100μs)	

Benefit



RGB Spot



Independent control by channel
for diverse color output

Dimension

