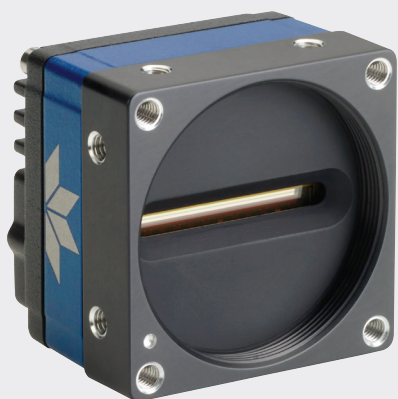


LINEA™ LITE

L2-GM-08K02S-00-A Line Scan Camera



KEY FEATURES

- 8k super resolution
- Multiple regions of interest for calibration and data reduction
- 4 programmable coefficient sets
- Digital Correlated Double Sampling
- Programmable I/Os
- Compact form factor
- Precision Time Protocol
- GigE, PoE

TYPICAL APPLICATIONS

- Automated optical inspection
- Battery inspection
- Printed circuit board
- Food packaging
- Film and textile
- Wood inspection
- Printed materials inspection
- Materials grading and inspection
- Web inspection
- General purpose machine vision

8k GigE Mono Cameras with M42 Optics

Compact and remarkably cost effective, Linea Lite makes line scan more accessible than ever. This GigE camera delivers stunning 8k resolution in a tiny package, with performance that normally requires pixels twice the size. Save on total system cost with small lenses.

We know every customer and every application is different, so we made Linea Lite flexible enough to handle a wide variety of tasks.

All of this and more fits neatly inside a package optimized for small Size, Weight, Power, and Cost (SWaP-C).

PIXEL OFFSET TECHNOLOGY

The 8k camera uses two 4k/7 μm pixel rows with $\frac{1}{2}$ pixel offset. Data from two 4k/7 μm images is captured and then reconstructed to achieve a super resolution image of 8k/3.5 μm in real time. This significantly enhances detectability of subpixel defects. One advantage of this technology is that it allows for the use of 4k/7 μm lenses without sacrificing responsivity and MTF due to the smaller pixel size.

SPECIFICATIONS

L2-GM-08K02S-00-A	
Resolution	8192 pixels
Line Rate	25 kHz
Pixel Size	3.5 x 3.5 μm
Interface	GigE
Data Format	8 bit
Dynamic Range (dB)	72
Full Well (ke-)	32
Read Noise (e-)	8.5
Power	+12 to +24V DC HD15 Connector or 48V POE
Power Dissipation	<6 W
Operating Temp	-10 to 65°C
Camera Size	46 x 46 x 37 mm
Camera Weight	< 120 g
Optical Interface	M42
Control & Data	GigE

SPECIFICATIONS

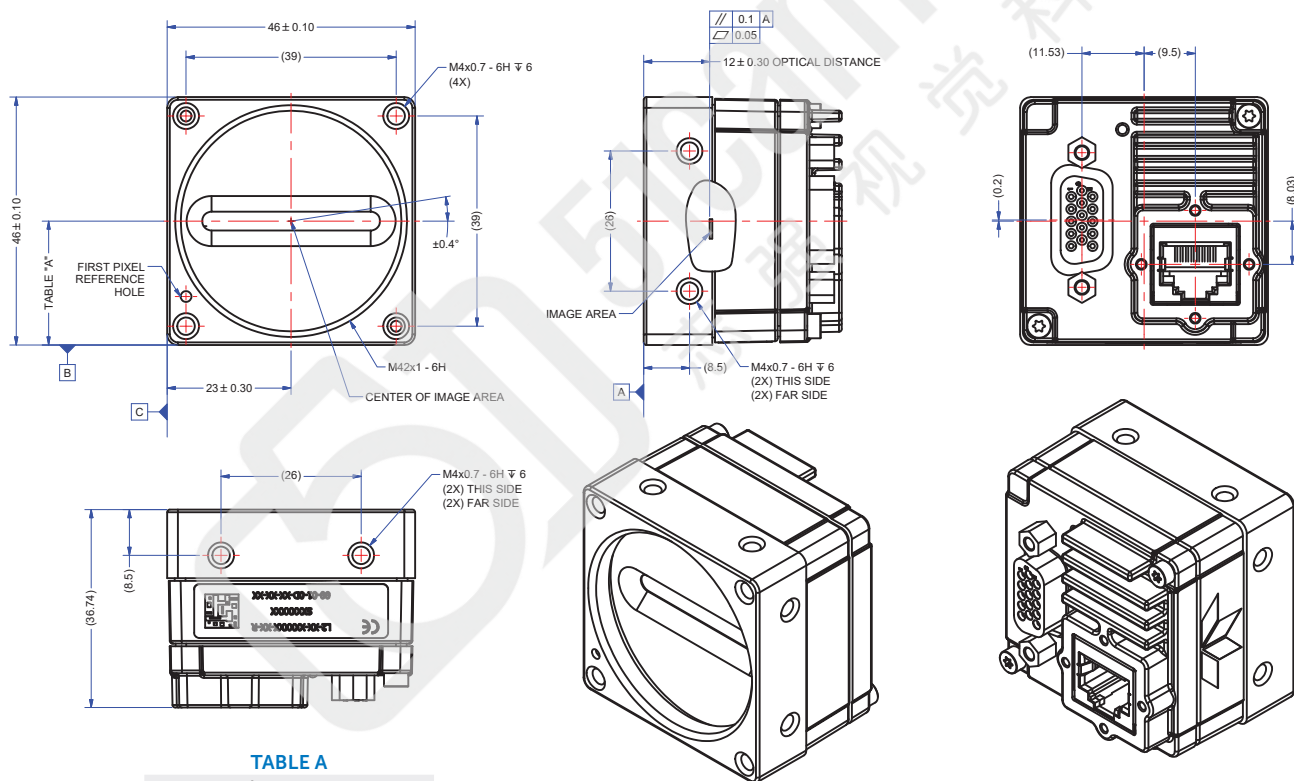
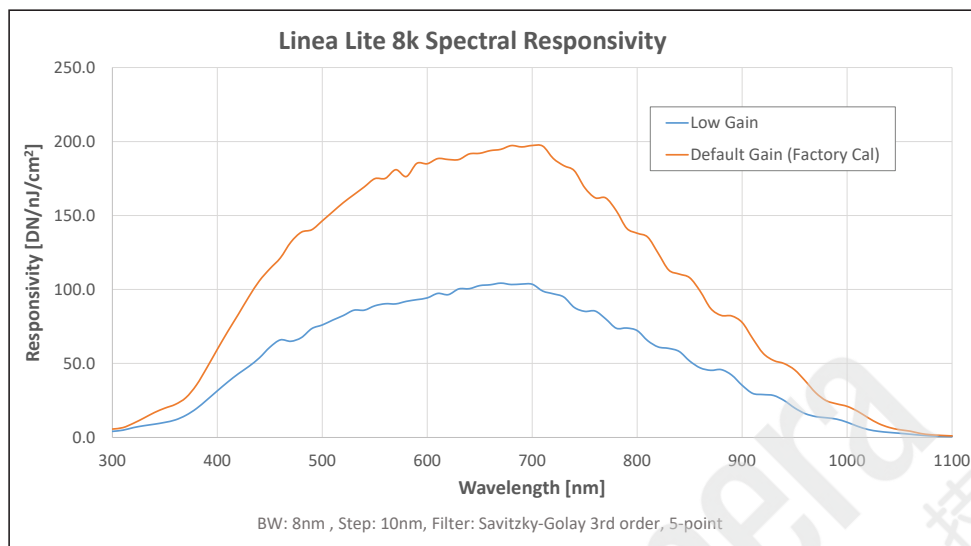


TABLE A

Camera P/N	Dimension
L2-XX-02KXXX-	23.2 ± 0.30
L2-XX-04KXXX-	23.0 ± 0.30
8K SR	22.96 ± 0.30

NOTES:
 1. UNITS: MILLIMETERS.
 2. IMAGE AREA IS ALIGNED TO DATUMS \square \square & \square

FOR MORE INFORMATION CONTACT:

AMERICAS Boston, USA | +1 978-670-2000 | TDI_sales.americas@teledynedalsa.com
 EUROPE Krailling, Germany | +49 89-89-54-57-3-80 | TDI_sales.europe@teledynedalsa.com
 ASIA PACIFIC Tokyo, Japan | +81 3-5960-6353 | TDI_sales.asia@teledynedalsa.com
 Shanghai, China | +86 21-3368-0027 | TDI_sales.asia@teledynedalsa.com

This document does not contain information whose export/transfer/disclosure is restricted by the Canadian Export Control regulation. Teledyne DALSA has its corporate offices in Waterloo, Canada. Teledyne DALSA reserves the right to make changes at any time without notice. © Teledyne DALSA.

Revision Number: 03-070-25001
 Revision Date: 2024 03 14