



www.51camera.com.cn



51camera抖音官方号



51camera微信公众号

## DALSA MX4

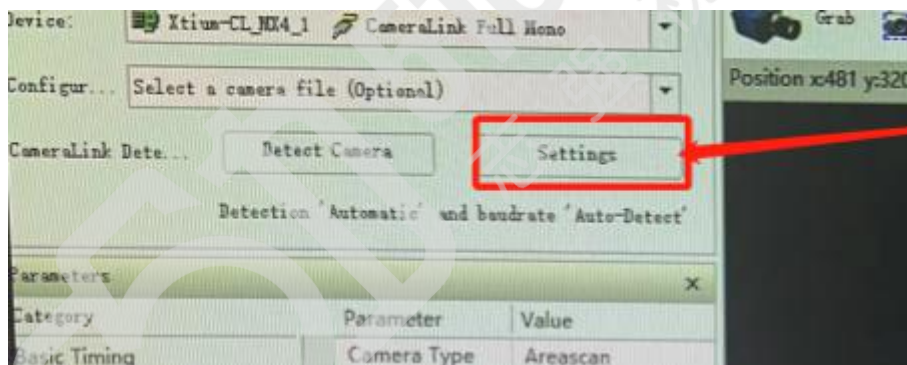
### 如何连接 P4 彩色相机

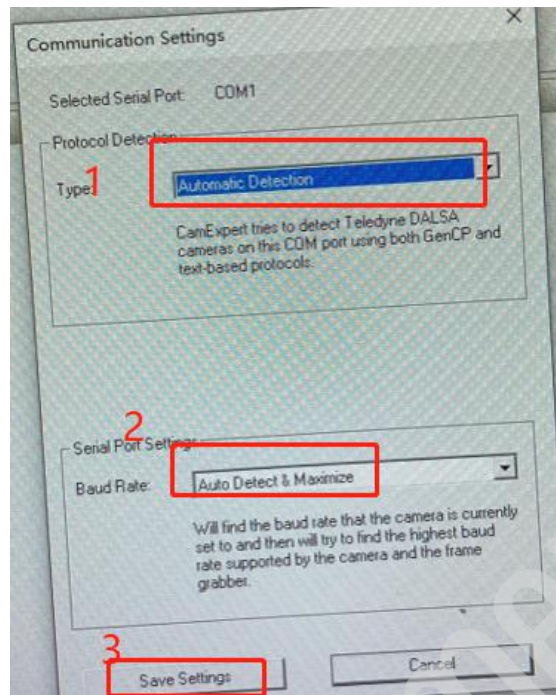
#### 目录

- 1: camexpert 上如何显示相机参数..... 1
- 2: 相机 TAP 配置..... 2

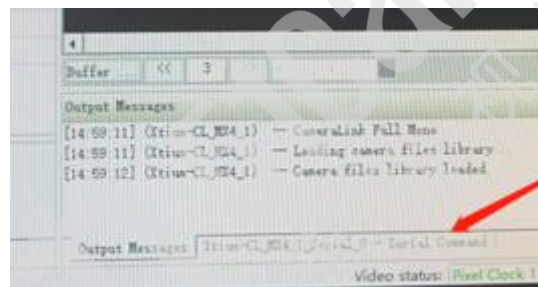
### 1、camexpert 上如何显示相机参数

A. setting 设成自动查找，再 Detect camera 查看是否能显示相机参数



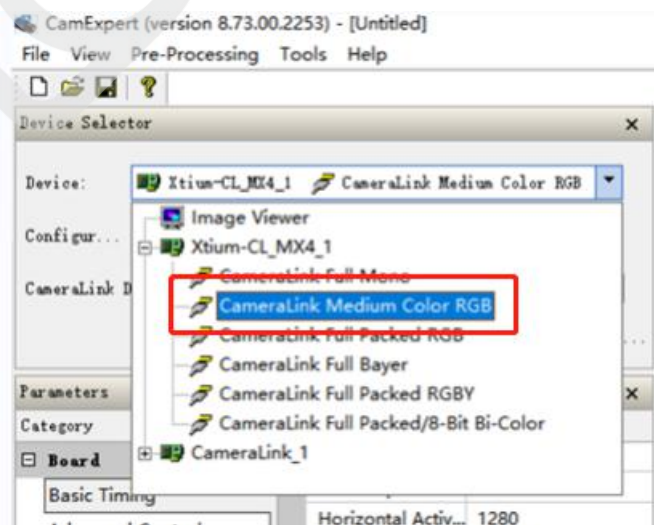


B.在此处输入 dek0 关闭串口

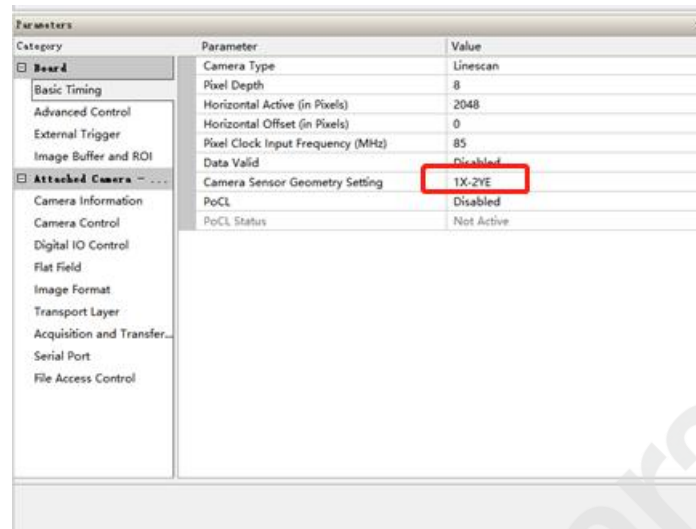


## 2、相机 TAP 配置

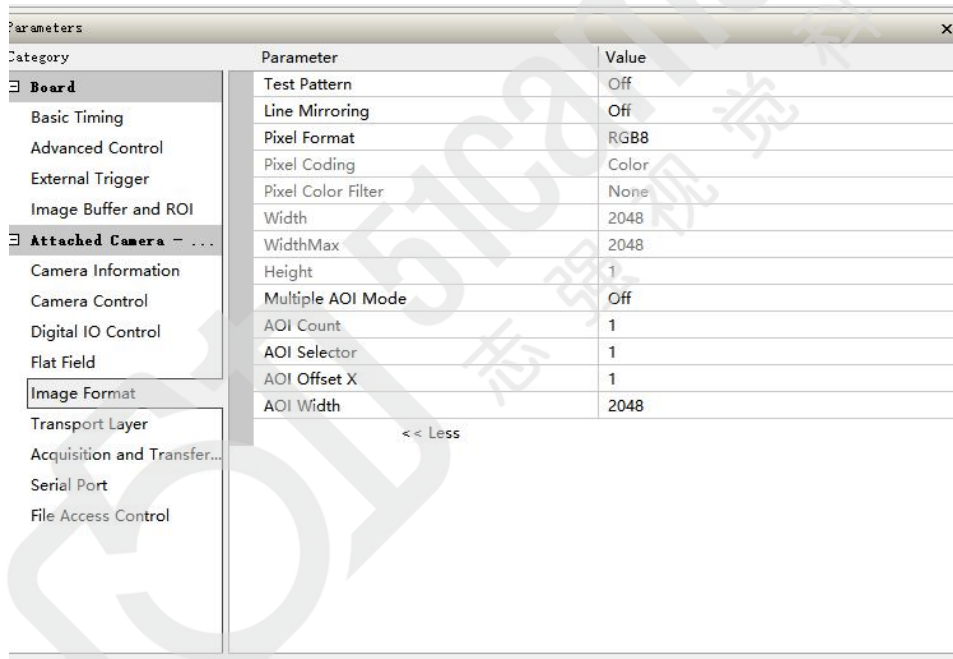
1) 选择 Camera Link Medium Color RGB (如下图)



2) Camera Sensor Geometry Setting 选择 1X-2YE (如下图)

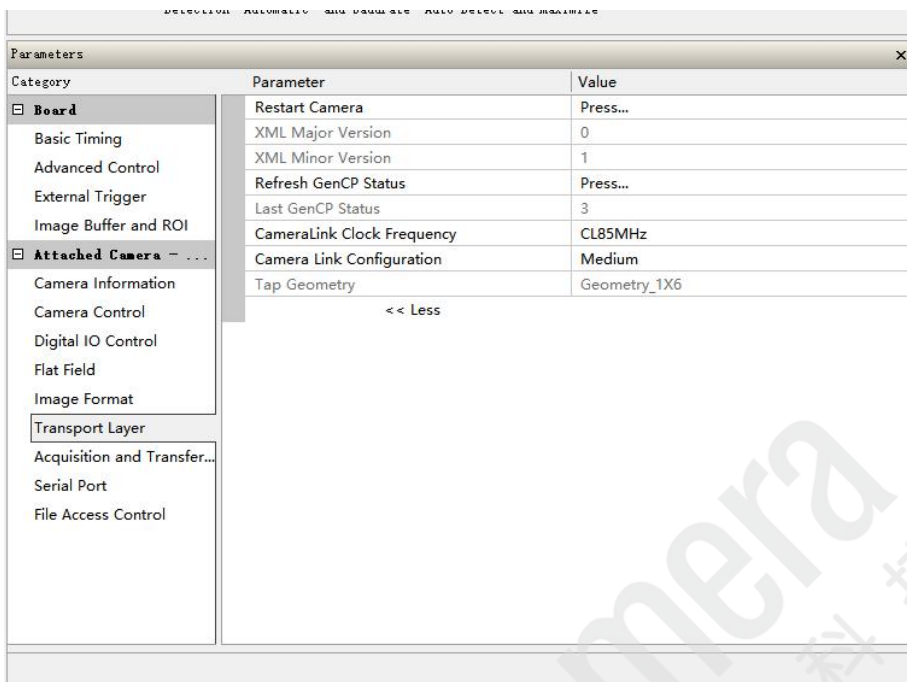


3) Pixel Format 选择 RGB8 (如下图)



4) CameraLink Clock Frequency 选择 CL85MMHz

5) Camera Link Configuration 选择 Medium (如下图)



联系我们: 北京志强视觉科技发展有限公司  
电话: +86 (010) 80482120  
传真: +86 (010) 80483130  
邮箱: 51camera@51camera.com.cn  
网址: www.51camera.com.cn