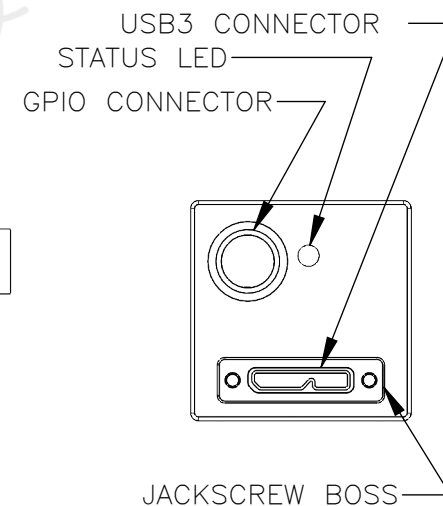
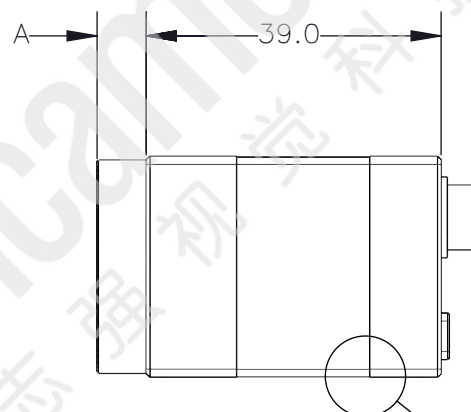
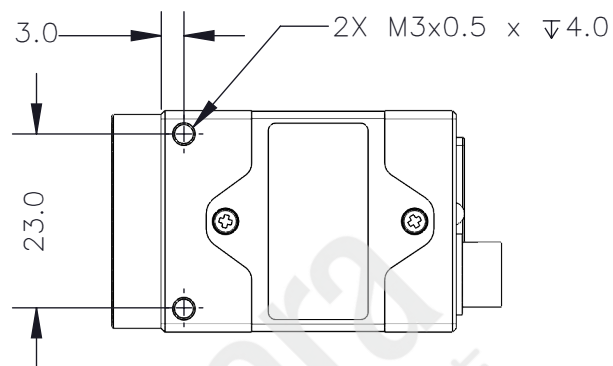
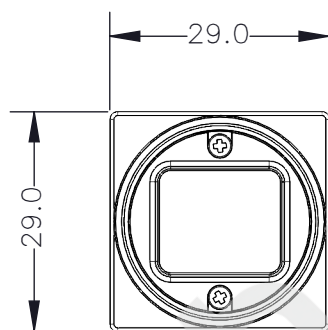
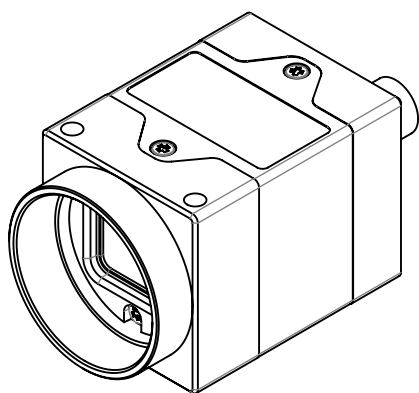
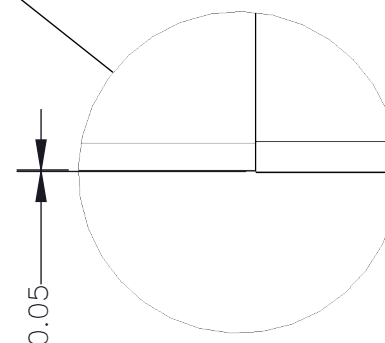
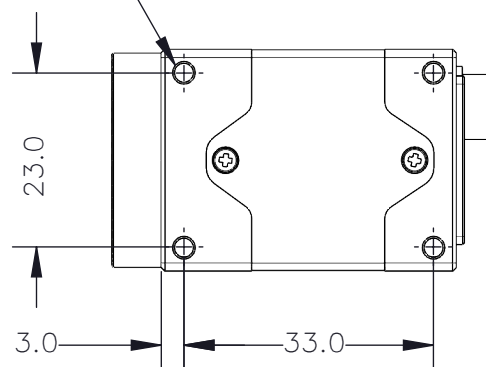


REVISIONS				
REV.	DESCRIPTION	DATE DONE	DONE BY	CHECKED BY
0	INITIAL RELEASE	17.DEC.18	CHRIS	GUS



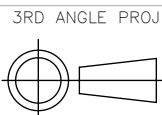
2X M3x0.5 x  $\nabla$ 4.0



BARREL LENGTH – "A" (+0.10/-0.15)		
SENSOR	C-MOUNT	CS-MOUNT
IMX421	6.5	—
IMX422	6.5	—
IMX425	6.5	—
IMX428	6.5	—
IMX429	6.5	—
IMX430	6.5	—
IMX432	6.5	—
IMX547	6.5	—



PROPRIETARY AND CONFIDENTIAL  
THE INFORMATION CONTAINED IN THIS DRAWING IS  
THE SOLE PROPERTY OF FLIR INTEGRATED IMAGING  
SOLUTIONS. ANY REPRODUCTION IN PART OR  
WHOLE WITHOUT THE WRITTEN PERMISSION OF FLIR  
INTEGRATED IMAGING SOLUTIONS IS PROHIBITED.



UNLESS OTHERWISE  
STATED:  
ALL DIMENSIONS IN MM  
MACHINE FINISH 1.6 $\mu$ M

SCALE DWG NO  
1:1 BFS-XL-02-R0  
SIZE TITLE  
A BFS-XL USB

SHEET  
1 OF 3  
REV  
0