

External control compatible with Ethernet and parallel communications



Adjust
light intensity to
1,024
levels



PJ2-1505-2CA-PE
2 channels



PJ2-3005-4CA-PE
4 channels



Compliant

The supplied AC cord is for use with 100 to 120 VAC.
If you want to use the Control Unit with 200 to 240 VAC,
you must procure another appropriate AC power cord.

Features

- Dedicated Analog Control Units for the Spot Light HLV3/HLV2 series. (Spot Light HLV3 series Product Page ► P. 151)
(Spot Light HLV2 series Product Page ► P. 157)
- Easily check and set operation of Light Units with the built-in LCD.
- Light intensity can be set in 1,024 steps.
- Available in 2-channel and 4-channel Light Unit output types.
- Can be controlled manually or via Ethernet or parallel communications.

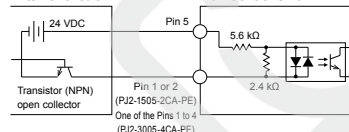
Example Connection

Refer to the "Instruction Guide" for details.

Example connections of external trigger signal

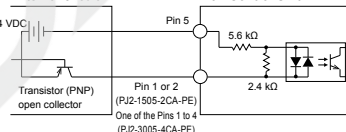
Sinking (NPN)

External circuit



Sourcing (PNP)

External circuit

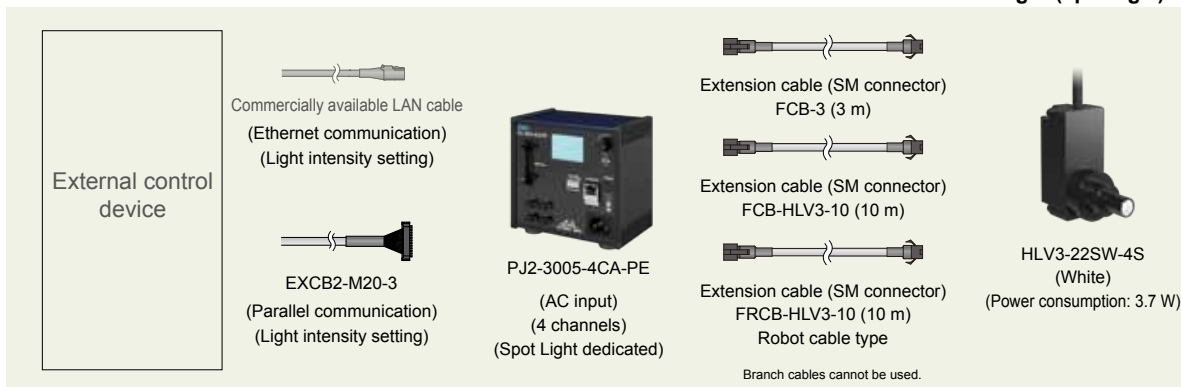


Connection specifications (for each terminal)				
Rated input voltage	Maximum input voltage	Photocoupler ON voltage / ON current	Photocoupler OFF voltage / OFF current	Response time
24 VDC	26.4 VDC	21.6 VDC min. / 4 mA min.	1.5 VDC max. / 1 mA max. or open-circuit	Refer to the Instruction Guide.

Example System Configuration

Example:

External control device — External control cables — Control Unit — Extension cables — LED Light (Spot Light)

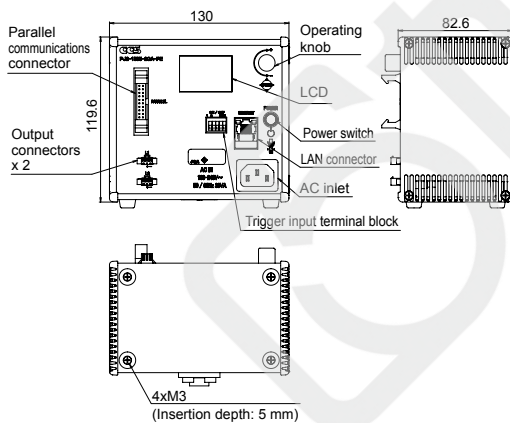


Specifications

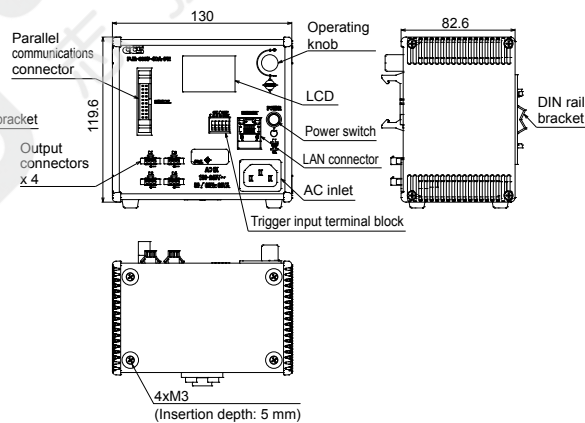
Model name	PJ2-1505-2CA-PE	PJ2-3005-4CA-PE
Lighting method	Continuous lighting	
Drive method	Constant-voltage system	
Intensity control method	Variable-current control	
Number of channels	2 channels	4 channels
Applicable Light Units	HLV3- and HLV2- series Spot Lights (The type of Spot Light is automatically detected.)	
Output voltage (ratings)	5.5 VDC	
Output current	1,000 mA max./channel (Depends on the maximum input current of the Spot Light.)	
Input power	100 to 240 VAC (+10%, -15%), 50/60 Hz	
Power consumption	38 VA max.	68 VA max.
Inrush current (typ.)	15 A (at 100 VAC), 36 A (at 240 VAC) from a cold start	
Ground leakage current	3.5 mA max. (264 VAC, 60 Hz, with no load)	
Insulation withstand voltage (input-output, input-FG)	1500 VAC for one minute, Cutoff current: 10 mA, 500 VDC, 20 MQ min.	
Overvoltage category	Category II	
Operating environment	Temperature: 0 to 40°C, Humidity: 20% to 85% (with no condensation), Altitude: 2,000 m max., Protective ground class: Class I, Pollution degree: 2, Indoor use only	
Storage environment	Temperature: -20 to 60°C, Humidity: 20% to 85% (with no condensation)	
Cooling method	Forced air cooling	Natural air cooling
CE marking	Safety standard: Conforms to EN 61010-1 EMC standard: Conforms to EN61000-6-2, EN61000-6-4	
Material, coating, and surface processing	Material: Aluminum and resin, Surface processing: Blue alumite	
Weight	700 g max.	
Accessories	Instruction Guide, 2-m-long 3-prong AC power cord with ground terminal	

Dimensions (mm)

PJ2-1505-2CA-PE



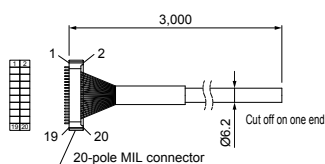
PJ2-3005-4CA-PE



Options

Parallel communication cable

EXCB2-M20-3



Pin No.	Wire color	Marks	Pin No.	Wire color	Marks
1	Orange	Black 1	11	Orange	Black 2
2	Orange	Red 1	12	Orange	Red 2
3	Gray	Black 1	13	Gray	Black 2
4	Gray	Red 1	14	Gray	Red 2
5	White	Black 1	15	White	Black 2
6	White	Red 1	16	White	Red 2
7	Yellow	Black 1	17	Yellow	Black 2
8	Yellow	Red 1	18	Yellow	Red 2
9	Pink	Black 1	19	Pink	Black 2
10	Pink	Red 1	20	Pink	Red 2

Base brackets

BK-PD3

Dimensions (mm)

