

**NEW**

# Constant-Voltage Analog Control Unit PSB4-60024-2-PEI



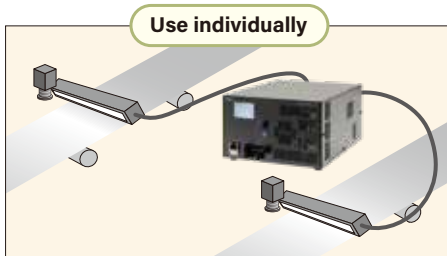
**PSB4-60024-2-PEI**  
600W / 2 Channels



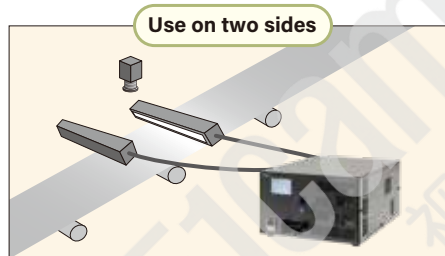
## 2 in 1 (2 x PSB4-30024-PEI in 1)

### Equipped with 2 channels. Independent operation possible

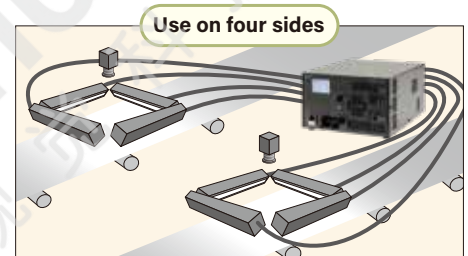
Multiple lights can be individually controlled with just the 1 power source!



Individually control lights for each inspection line



Can be dimmed individually to adjust variations in brightness



Surround from four directions for individual line light control

**Up to 300W per channel, for 600W total of connected lights. Lights from our wide lineup can be connected**

Line sensor lights



LNSP2 series



LNSD series



LNIS series

Flat lights



Long type



Large type



Hole type

**Lights from our wide lineup can be connected**

Various light models can be connected, such as line sensor lights and area sensor lights. Contact our local sales office for details.

**Uses an LCD display for improved visibility**



Displays the set value, unit status, operating menu, etc.

**Uses an operating knob for intuitive operation**



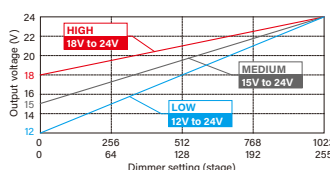
Simple "turn", "press", "push" and "hold" operations

**Dimmer value can be set to 256 or 1,024 levels**



Dimmer level can only be selected for manual control or parallel communication. EtherNet communications enables 1,024 levels.

**Dimmer range can be switched between 3 levels**



Select based on lighting characteristics or to suit the application

**Equipped with a metal connector and EL connector**

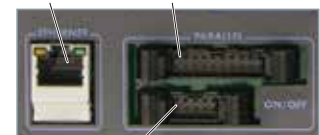
EL connector Metal connector EL connector Metal connector



Various lights can be connected

**External control via EtherNet/parallel communication**

LAN connector Parallel communication connector



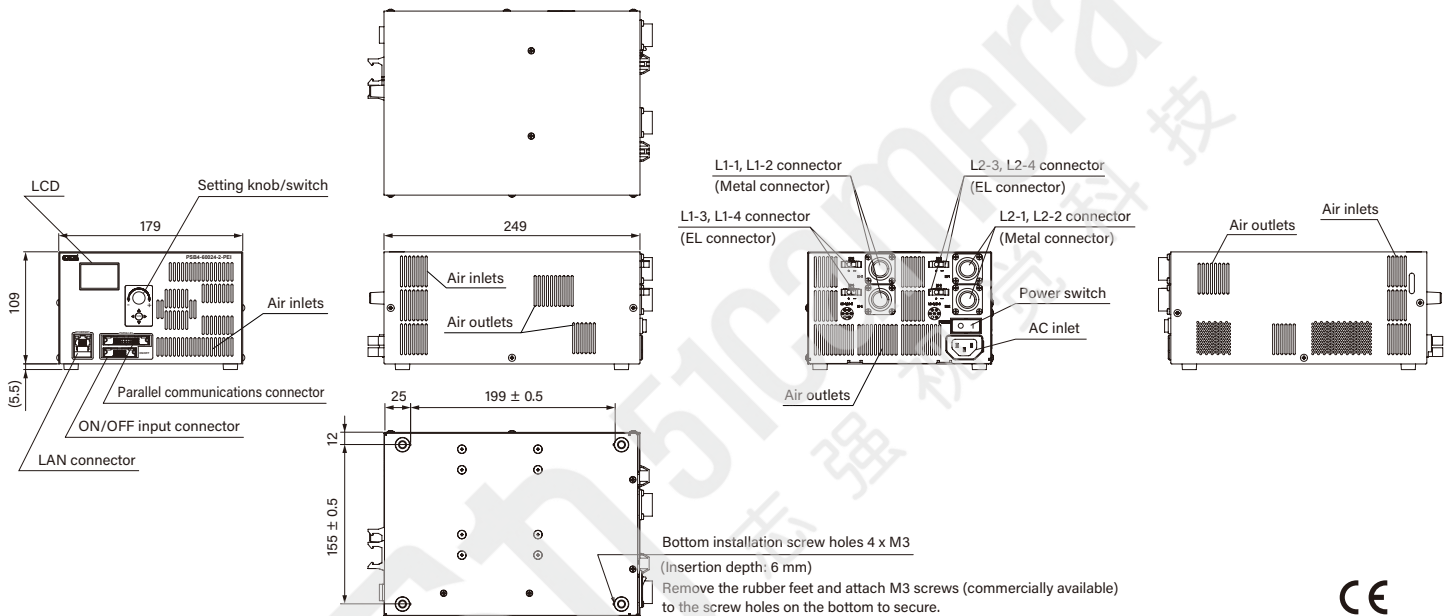
ON/OFF input connector

## Specifications

|                                 |  |   |
|---------------------------------|--|---|
| Model name                      | PSB4-60024-2-PEI   |   |
| Lighting method                 | Continuous lighting  |   |
| Drive method                    | Constant-voltage system  |   |
| Intensity control method        | Variable-voltage control   |   |
| Number of channels              | 2 channels (L1, L2)  |   |
| Applicable Light Units (rating) | Metal connector (L1-1, L1-2/L2-1, L2-2): 24V 300W (1 connector 300W or less)<br>EL connector (L1-3, L1-4/L2-3, L2-4): 24V 300W (1 connector 150W or less)<br>All L1 connectors total: 300W or less (same as L2 connectors) |   |
| Intensity control               | Manual   | Operation on the front panel, 256 or 1,024 levels                                       |
|                                 | External   | Command input via TCP/IP or UDP/IP communications<br>Signal input through parallel port |
| ON/OFF control                  | External   | Command input via TCP/IP or UDP/IP communications<br>Signal input through parallel port |
| Input power                     | 100 to 240 VAC (+10%, -15%), 50/60 Hz  |   |
| Output current (rating)         | 12.5A/channel, 2 channels total: 25A   |   |

|   |  |
|---|--|
| Power consumption (typ.)                              | 765 VA   |
| Inrush current (typ.)                                 | 55A/95A (primary/secondary value, at 100 VAC),<br>132A/132A (primary/secondary value, at 240 VAC) during cold start  |
| Frequency   | 50/60 Hz   |
| Ground leakage current                                | 3.5 mA max. (264 VAC, 60 Hz, with no load)   |
| Insulation withstand voltage (input-output, input-FG) | 1500 VAC for one minute, Cutoff current: 20 mA,<br>500 VDC, 20 MΩ min.   |
| Operating environment                                 | Temperature: 0 to 40°C, Humidity: 20% to 85% (with no condensation)  |
| Storage environment                                   | Temperature: -20 to 60°C, Humidity: 20% to 85% (with no condensation)  |
| Cooling method  | Forced air cooling   |
| CE marking  | Low voltage directive (LVD) 2014/35/EU, Standard EN61010-1<br>EMC directive 2014/30/EU, Standard EN61000-6-2, EN61000-6-4<br>RoHS directive 2011/65/EU, Standard EN50581 |
| Environmental regulations                             | RoHS compliant   |
| Material, coating, and surface processing             | Steel sheet, Cover thickness: 1.0 mm, Chassis thickness: 1.6 mm, N3 (leather tone)   |
| Weight  | 4,100 g max.   |
| Accessories   | Instruction guide, 2-m-long 3-prong AC power cord with ground terminal   |

## Dimensions (mm)

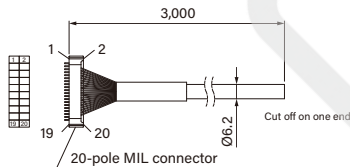


## Optional Accessories (mm)

Optional items are the same as for PSB4-30024-PEI.

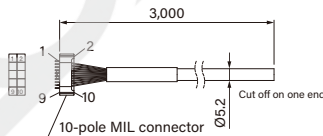
### Parallel Communications Cable

Model name: EXCB2-M20-3



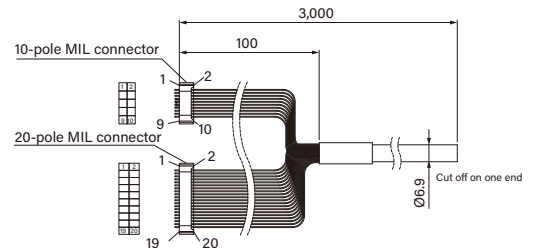
### ON/OFF Input Cable

Model name: EXCB2-M10-3



### Parallel Communications and ON/OFF Input Branch Cable

Model name: EXCB2-M10M20-3



● CCS, "LIGHTING SOLUTION", and "PSB" are registered trademarks or trademarks of CCS Inc.

## Notes

● To ensure proper and safe use of the product, please read the Instruction Guide completely before using the product. ● The design and specifications of this product are subject to change without notification for product improvement.



**CCS Inc.**

**Headquarters** (Kyoto, Japan)  
TEL: +81-75-415-8284, FAX: +81-75-415-8316  
E-mail: sales@ccs-inc.co.jp  
<https://www.ccs-grp.com/>

**CCS Asia PTE. LTD.** (Singapore)  
TEL: +65-6363-1180, FAX: +65-6363-1236  
Email: sales@ccs-asia.com.sg  
<https://www.ccs-asia.com.sg/>

**CCS China Inc.** (Shenzhen)  
TEL: +86-755-8279-0477, FAX: +86-755-8279-0478  
Email: ccschina@ccs-inc.co.jp  
<https://www.ccs-inc.cn/>

**CCS America, Inc.** (USA)  
TEL: +1-781-272-6900, FAX: +1-781-272-6902  
Email: info@ccsamerica.com  
<https://www.ccsamerica.com/>

**CCS MV (Thailand) Co., Ltd.**  
TEL: +66-(0)2-779-1051, FAX: +66-(0)2-779-1054  
Email: sales@ccs-asia.com.sg  
<https://www.ccs-asia.com.sg/>

**Taiwan Office**  
TEL: +886-2-2581-7676, FAX: +886-2-2581-7662  
Email: taiwan-tr@ccs-inc.co.jp

**CCS Europe N. V.** (Belgium)  
TEL: +32-(0)2-333-0080, FAX: +32-(0)2-333-0081  
Email: info@ccseu.com

**CCS MV (Malaysia) Sdn. Bhd.**  
TEL: +604-611-6656  
Email: sales-msia@ccs-asia.com.sg  
<https://www.ccs-asia.com.sg/>

**KOREA Testing Room**  
Email: ccskorea@ccs-inc.co.jp

For information on your nearest CCS office, refer to our website.  
<https://www.ccs-grp.com/office/>

