

# Polarizing Plates

Refer to our website for product details.

CCS polarizing plates

Search

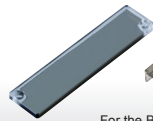


You can also use your smartphone or cell phone.

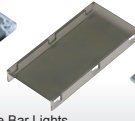
These are used together with a polarizing filter attached to the camera lens for the purpose of eliminating surface glare.



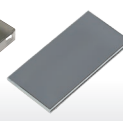
For the Ring Lights  
LDR2 / LDR-PF Series



For the Bar Lights  
LDL2-19X4 Series  
LDL2-33X8 Series



LDL2 Series  
LDL-PF Series



For the Spot Lights  
LSP Series

## For the Ring Lights LDR2 / SQR / LDR-PF Series

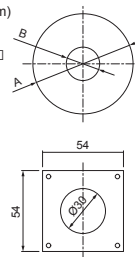
Model name	Applicable Light Unit (Common for all colors)	Dimensions		
		A	B	Thickness
PL-LDR-32*1	LDR2-32	Ø32	Ø9	0.8
PL-LDR-42*1	LDR2-42	Ø42	Ø14	
PL-LDR-50*1	LDR2-50	Ø50	Ø26	
PL-LDR-70	LDR2-70	Ø76*2	Ø35	
PL-LDR-90*1	LDR2-90	Ø90	Ø40	
PL-LDR-90-H28**3	LDR2-90-30	Ø90	Ø28	
PL-LDR-120-40*1	LDR2-120	Ø120	Ø40	
PL-SQR-56	SQR-56	Refer to the drawing		
PL-LDR-PF-36*1	LDR-PF-36	Ø36	Ø10	
PL-LDR-PF-54*1	LDR-PF-54	Ø54	Ø22	
PL-LDR-PF-75*1	LDR-PF-75	Ø75	Ø35	(2)

• Dimensions (mm)

PL-LDR-□□

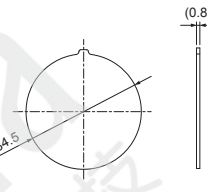
PL-LDR-PF-□□

PL-SQR-56



## For the Spot Lights LSP Series

Model name	Applicable Light Unit (Common for all colors)
PL-LSP-41	LSP-41



## For the Bar Lights LDL2 / LDL-PF Series

Model name	Applicable Light Unit (Common for all colors)	Dimensions	
		A	B
PL-LDL2-19X4-HO	LDL2-19X4	6.4	28
PL-LDL2-19X4-VE			
PL-LDL2-33X8-HO	LDL2-33X8	10.4	44
PL-LDL2-33X8-VE			
PL-LDL2-41X16	LDL2-41X16	23.2	46
PL-LDL2-41X16-VE			
PL-LDL2-80X16	LDL2-80X16	23.2	84.7
PL-LDL2-80X16-VE			
PL-LDL2-119X16	LDL2-119X16	23.2	123.7
PL-LDL2-119X16-VE			
PL-LDL2-158X16	LDL2-158X16	23.2	162.7
PL-LDL2-158X16-VE			
PL-LDL-PF-52X18-HO	LDL-PF-52X18	22	58
PL-LDL-PF-52X18-VE			
PL-LDL-PF-102X18-HO	LDL-PF-102X18	22	108
PL-LDL-PF-102X18-VE			

Model name	Applicable Light Unit (Common for all colors)	Dimensions	
		A	B
PL-LDL-PF-152X18-HO	LDL-PF-152X18	22	158
PL-LDL-PF-152X18-VE			
PL-LDL2-26X30	LDL2-26X30	30.7	79
PL-LDL2-26X30-VE			
PL-LDL2-50X30	LDL2-50X30	30.7	79
PL-LDL2-50X30-VE			
PL-LDL2-74X30	LDL2-74X30	30.7	79
PL-LDL2-74X30-VE			
PL-LDL2-98X30	LDL2-98X30	37.2	102.7
PL-LDL2-98X30-VE			
PL-LDL2-122X30	LDL2-122X30	37.2	126.7
PL-LDL2-122X30-VE			
PL-LDL2-146X30	LDL2-146X30	37.2	150.7
PL-LDL2-146X30-VE			
PL-LDL2-218X30	LDL2-218X30	37.2	222.7
PL-LDL2-218X30-VE			

Model name	Applicable Light Unit (Common for all colors)	Dimensions	
		A	B
PL-LDL2-266X30	LDL2-266X30	37.2	270.7
PL-LDL2-266X30-VE			
PL-LDL-PF-52X30-HO	LDL-PF-52X30	34	58
PL-LDL-PF-52X30-VE			
PL-LDL-PF-102X30-HO	LDL-PF-102X30	34	108
PL-LDL-PF-102X30-VE			
PL-LDL-PF-152X30-HO	LDL-PF-152X30	34	158
PL-LDL-PF-152X30-VE			

• Dimensions (mm)



## For the Bar Lights HLDL3 Series

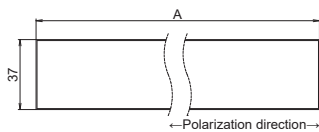
Model name	Applicable Light Unit (Common for all colors)	Dimensions	
		A	B
PL-HLDL3-150-HO	HLDL3-150X28	154	—
PL-HLDL3-150-VE			
PL-HLDL3-300-HO	HLDL3-300X28	304	—
PL-HLDL3-300-VE			
PL-HLDL3-450-HO	HLDL3-450X28	454	—
PL-HLDL3-450-VE			
PL-HLDL3-600-HO	HLDL3-600X28	604	—
PL-HLDL3-600-VE			
PL-HLDL3-750-HO	HLDL3-750X28	754	—
PL-HLDL3-750-VE			
PL-HLDL3-900-HO	HLDL3-900X28	904	—
PL-HLDL3-900-VE			

Model name	Applicable Light Unit (Common for all colors)	Dimensions		
		A	B	C
PL-HLDL3-1050-HO	HLDL3-1050X28	1054	(527)	—
PL-HLDL3-1050-VE				
PL-HLDL3-1200-HO	HLDL3-1200X28	1204	(602)	—
PL-HLDL3-1200-VE				
PL-HLDL3-1350-HO	HLDL3-1350X28	1354	(677)	—
PL-HLDL3-1350-VE				
PL-HLDL3-1500-HO	HLDL3-1500X28	1504	(752)	—
PL-HLDL3-1500-VE				
PL-HLDL3-1650-HO	HLDL3-1650X28	1654	(827)	—
PL-HLDL3-1650-VE				
PL-HLDL3-1800-HO	HLDL3-1800X28	1804	(902)	—
PL-HLDL3-1800-VE				

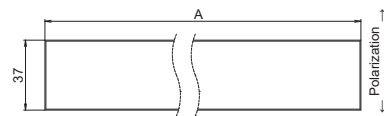
\* Remove the diffusion plate to mount the polarizing plate. If you want to use both the polarizing plate and diffusion plate, contact us for custom orders.  
Note: There may be some lifting between the film and resin plate due to environmental changes. However, this will not affect functionality and performance.

• Dimensions (mm)

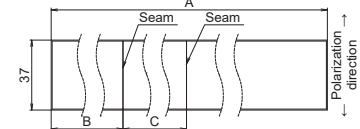
PL-HLDL3-n-HO  
(n = 150 to 900)



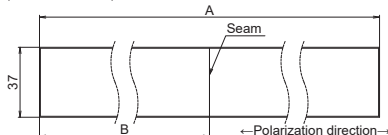
PL-HLDL3-n-VE  
(n = 150 to 600)



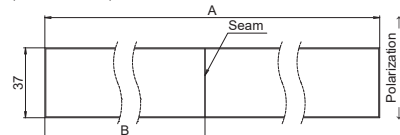
PL-HLDL3-n-VE  
(n = 1350 to 1800)



PL-HLDL3-n-HO  
(n = 1050 to 1800)



PL-HLDL3-n-VE  
(n = 750 to 1200)



Caution

Polarizing plates are consumables. Heat may cause deformation or discoloring depending on the use environment. Make sure that countermeasures against overheating are implemented and that the temperature does not exceed the operating limit.

- Control Units and Controllers
- PD3
- PD2
- PSB
- POD
- PTU2
- PF
- CN-EPOE
- CN-4024-2-EIPT
- PB-2430-1
- CC-ST-1024
- PJ2
- PJ
- CC-PJ-0707
- PSCC
- PSB4
- PSB3-30024
- Band-Pass Filters
- Lens Filters
- Diffusion Plates
- Polarizing Plates
- Light Control Films
- Fixtures, etc.
- Brackets
- SM/EL Cables

These are used together with a polarizing filter attached to the camera lens for the purpose of eliminating surface glare.



For the Coaxial Lights  
LFV3 / LFV-PF Series

There are two types of polarizing plates for the Bar Lights LDL2 Series. They are used together as shown below.

Installation to illuminate the workpiece from all four directions:

Example: Four LDL2-41X16 units

PL-LDL2-41X16 (PL-LDL2-33X8-HO)  
There are two types and they should be combined so that they are paired.

PL-LDL2-41X16-VE (PL-LDL2-33X8-VE)

Polarization direction is 90° different.

• Distinguishing paired polarizing plates

Paired: Appears to be black

Not paired: Does not appear to be black

When the model number ends with or without HO  
As shown in the figure, the polarization direction is **horizontal** with respect to the long side of the polarizing plate.

With or without HO

For VE  
As shown in the figure, the polarization direction is **perpendicular** with respect to the long side of the polarizing plate.

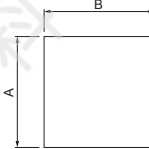
Refer to the Technical Guide (Glossary) for polarization. ▶P.405

### For the Coaxial Lights LFV3 / LFV-PF Series

Model name	Applicable Light Unit (Common for all colors)	Dimensions		
		A	B	Thickness
PL-LFV3-35	LFV3-35 / LFV-PF-35	34	42	0.8
PL-LFV3-50	LFV3-50 / LFV-PF-50	52	56	
PL-LFV3-50X100	LFV3-50X100	52	106	
PL-LFV3-70	LFV3-70 / LFV-PF-70	73	80	

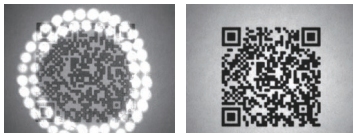
Model name	Applicable Light Unit (Common for all colors)	Dimensions		
		A	B	Thickness
PL-LFV3-100	LFV3-100 / LFV-PF-100	100	106	0.8
PL-LFV3-130	LFV3-130	130	138	
PL-LFV3-200	LFV3-200	202	222	

• Dimensions (mm)



#### Example of usage

Imaging of QR code

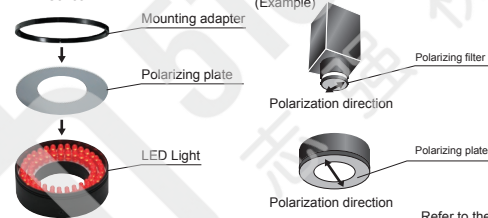


No polarizing plate

Using a polarizing plate

#### Example installation

Example: Attachment of Ring Lights LDR2 Series



Adjustment procedures for polarizing plates and polarizing filters  
Specular reflective components are cut out and the effects can be observed when the polarization direction of the polarizing plate installed on the Light Unit and the polarization direction of the filter attached to the camera are at a right angle (90°) to each other.

Refer to the Technical Guide (Glossary) for polarization. ▶P.405

**Caution** Polarizing plates are consumables. Heat may cause deformation or discoloring depending on the use environment. Make sure that countermeasures against overheating are implemented and that the temperature does not exceed the operating limit.