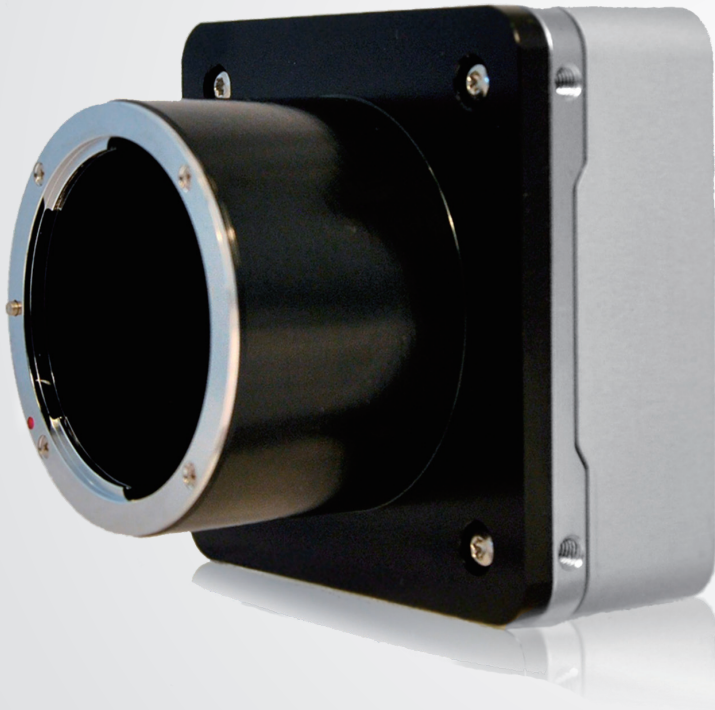


SAPPHIRE series

S-25A70

Adimec
Excellence in Imaging



Adimec offers the Sapphire S-25A70 CXP camera in a low power compact outline design, not requiring forced cooling through a fan. The Sapphire is based on Adimec's new second generation CoaXPress V1.1.1 compliant 25 Gb/s CoaXPress Quad interface. This interface is also fully backward compatible with existing V1.0 frame grabbers.

CoaXPress[®]

Target



25 Megapixel Resolution at 72 fps



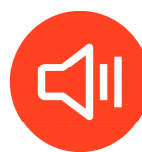
True Global Shutter CMOS



CoaXPress V1.1.1 compliant



No forced cooling required



Low noise performance



OnSemi VITA25k sensor

25 Megapixel High Resolution Metrology Camera

Specifications

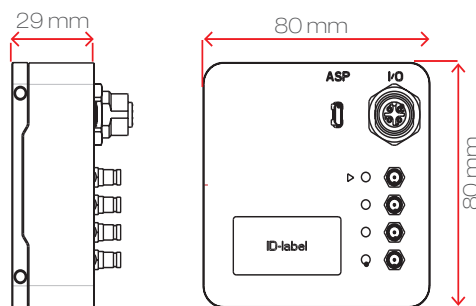
	S-25A70
Sensor	Vita25k CMOS
Pixel size	4.5 µm x 4.5 µm with micro lenses
Resolution	5120 (H) x 5120 (V)
Optical sensor size	35 mm
Video Output	CoaXPress - V1.1.1/ V1.0 CXP3 or CXP6 2, 4 lanes configurable
Max frame rate (8bit 4x CXP6)	72+ fps
Dynamic range	56 dB linear
Full Well*	22ke- (max)
Electronic shutter	Global shutter 5T (PLS <1/700)
Image acquisition	Continuous / Controlled
Output resolution	8 / 10 Bit
Monochrome / Color	Monochrome / Color
Power input	24 Vdc PoCXP
Power usage	< 8.5 W
Operating temperature	0°C to +30°C or max housing temp +50°C
Reliability	MTBF > 75,000 h @ 30°C
Weight	< 400 g excluding lens mount
Lens mount	F-mount (Optional: TFL-II, M42, T2 or EF)
Compliance	CE, ROHS

* specification OnSemi

Functionality

Defect pixel correction	√	√
Manual white balance	-	√
One push AWB	-	√
ROI (single, multi band-WOI)	√	√
Frame counter	√	√
LUT	√	√
Digital fine gain (1x to 32x)	√	√
Automatic black level control	√	√
PRNU and DSNU calibrations	√	√
Non-volatile calibration data storage	√	√
Programmable I/O	√	√

Dimensions



Adimec support

Adimec Sapphire cameras are designed, optimized and calibrated for demanding inspection and metrology applications.

Additionally the Adimec application experts support our customers in integrating the Sapphire camera and tuning the images to fit their measurement.

Please contact your Adimec representative for further assistance.

For maximum image quality, performance, and reliability in demanding applications - Choose Adimec

North America	Europe	Japan & Korea	Asia - Pacific	China
Phone: (+1) 781-279-0770	(+31) 40-2353900	(+81) 3-5968-8377	(+65) 6334-1236	(+86)21 6266 1692
Fax: (+1) 781-279-0771		(+81) 3-5968-8388	(+65) 6334-1436	
E-mail salesus@adimec.com	saleseu@adimec.com	salesjp@adimec.com	salesap@adimec.com	

LFL S25A70 new L&F ver 1.1 Jul 2021 - Detailed information on request - Subject to change without notice - Actual products may differ from photos

Adimec
www.adimec.com