

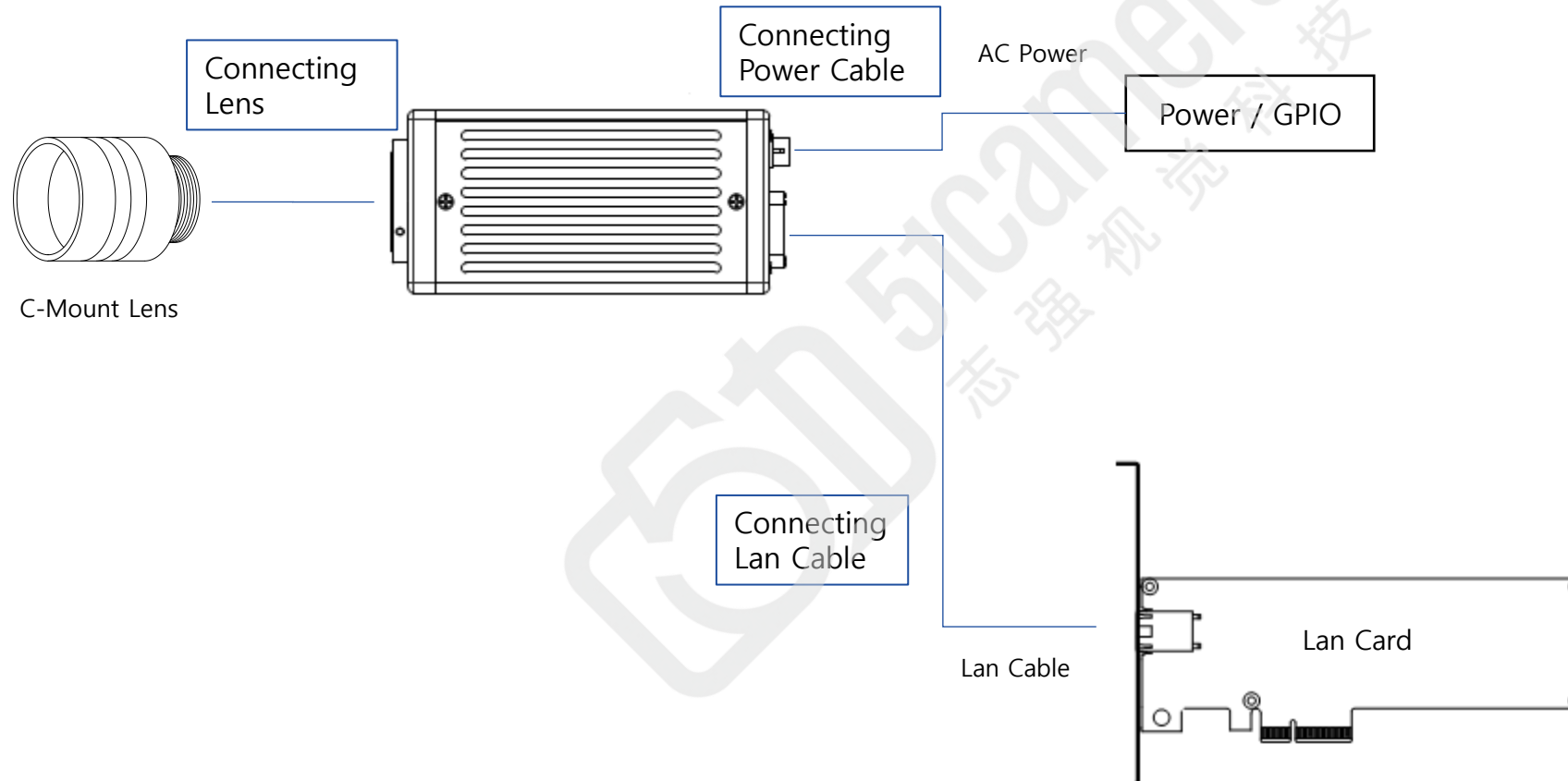


Quick Manual
ABA-013(003)VIR



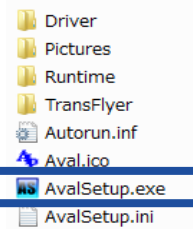
1.How to connect InGaAs Camera

Giga Ethernet

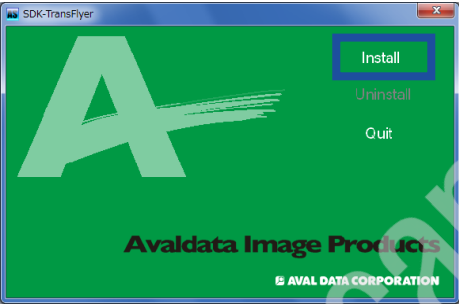


2. TransFlyer Installation

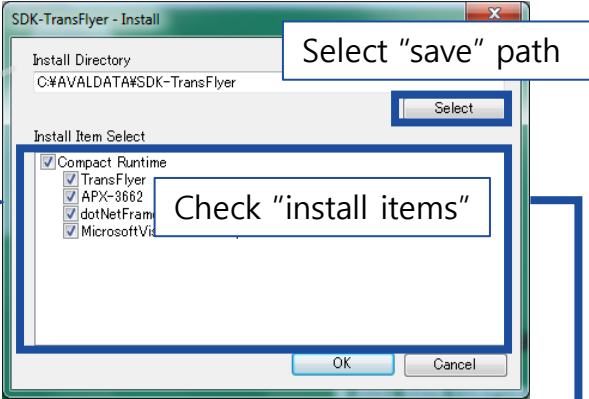
How to install



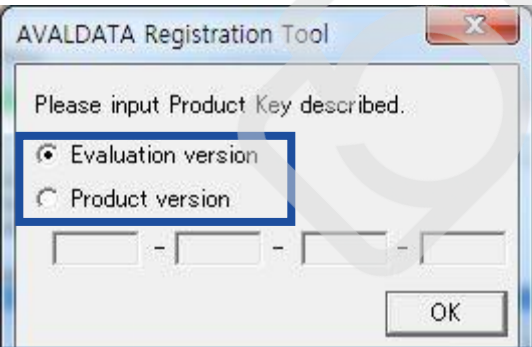
Run AvalSetup.exe



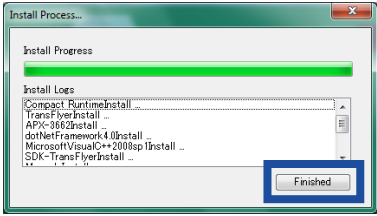
Select "Install"



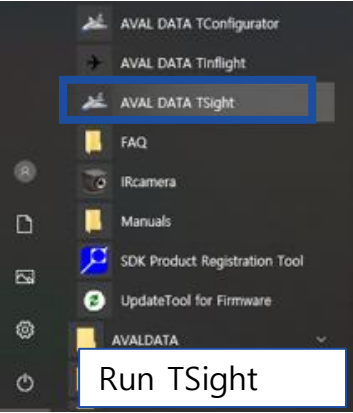
Check both boxes



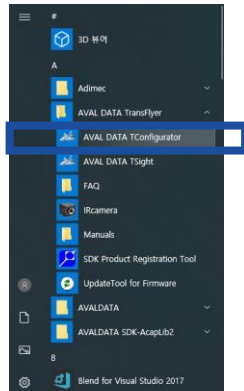
Check Product version if there is Serial Number
Check Evaluation version if there is no Serial Number



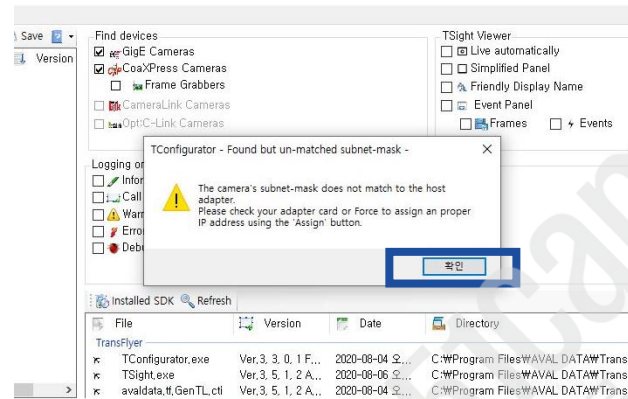
Installation complete



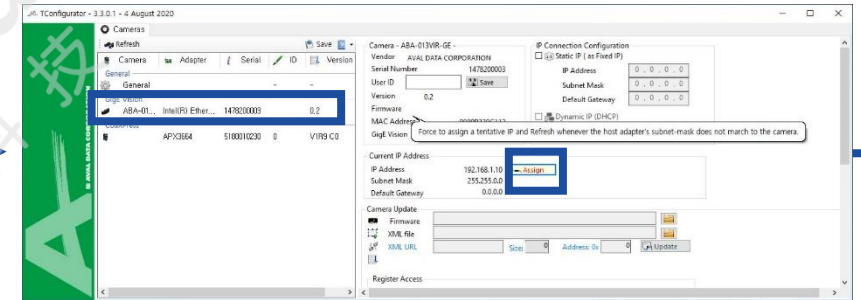
3.Giga Ethernet Camera IP Set-up



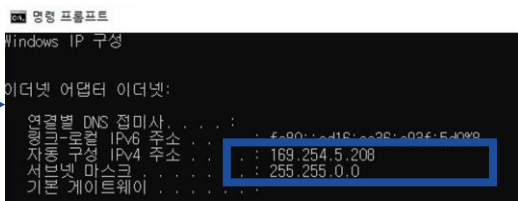
Start – Run AVAL DATA TransFlyer - AVAL DATA Tconfigurator



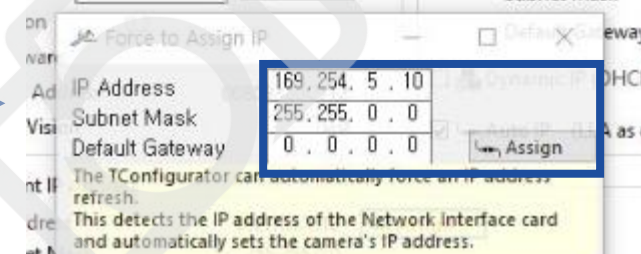
Click "Confirm"



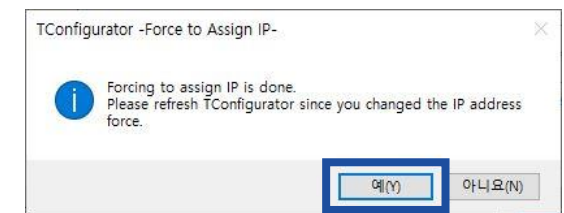
Click "Assign" button after selecting camera



Start – Confirm the current IP address with cmd- ipconfig



Click "Assign" button after entering IP information (IP can collide if the IP address from cmd is the same)



Click "(Y)"

IR Camera Program

IR Camera Interface

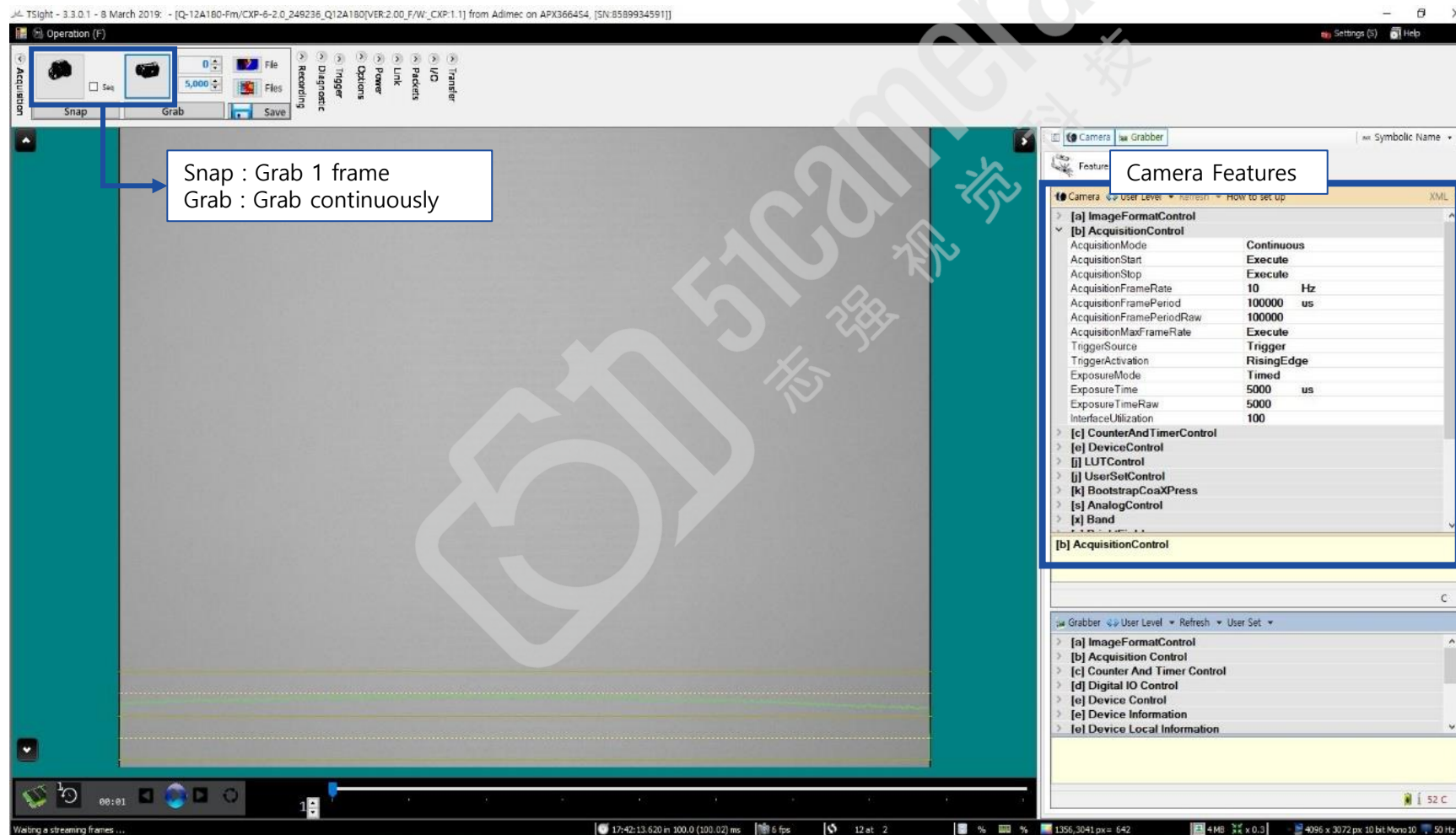
The screenshot shows the IR Camera software interface with the following callouts:

- Image Acquisition Start/Stop**: Points to the Stop button in the top toolbar.
- Line Profile Show/Hide**: Points to the Profile button in the top toolbar.
- Camera advanced settings**: Points to the Config button in the top toolbar.
- Save latest image**: Points to the Save button in the top toolbar.
- Show Help**: Points to the Help button in the top toolbar.
- Acquired Image**: Points to the main video feed area.
- Modify image format**: Points to the PixelFormat dropdown menu.
- Modify output rate**: Points to the FrameRate slider.
- Modify exposure time**: Points to the ExposureTime slider.
- Modify brightness or gain**: Points to the Offset slider.
- Modify sensitivity level**: Points to the Gain slider.
- Modify Peltier temperature (For available camera only)**: Points to the PeltierTargetTemp slider.
- Contrast enhancement Enable/Disable**: Points to the ContrastEnhancement checkbox.
- Histogram of displaying image (Enable contrast enhancement by right click and drag)**: Points to the histogram graph.
- Tool status information**: Points to the status bar at the bottom.
- Coordinate/Brightness value at the cursor point**: Points to the coordinate and brightness values in the status bar.
- Camera output image format**: Points to the resolution and bit depth in the status bar.
- Acquisition rate**: Points to the frame rate in the status bar.
- Sensor temperature**: Points to the sensor temperature in the status bar.

The status bar at the bottom displays: (297, 92)=99 | 320 x 256px (8bit) | 17.86 fps | SensorTemp : 15.03 °C

TransFlyer GUI

TransFlyer Interface



Power connector (HR10A-10P-12S)

: ABA-013VIR, ABA-003VIR uses +12V~24V $\pm 1V$ power input to operate.

※ **In case of using 24V, it must be cooled from outside.**

Voltage ranges depend on the camera, therefore, check the camera spec. This connector provides GPIO. GPI can be used as an external trigger, while GPO can be used as flash, FVAL and LVAL.

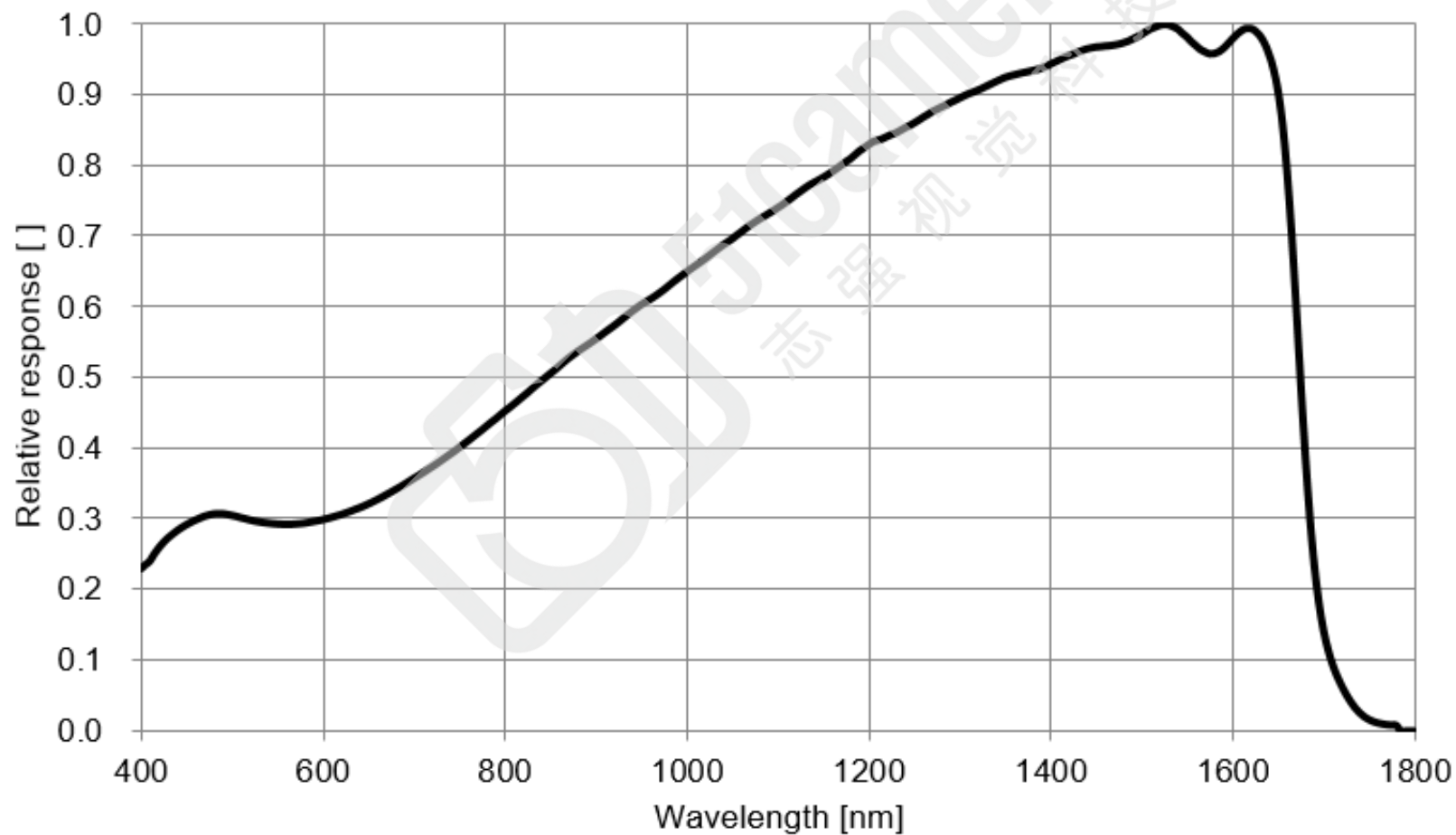
Cable connector :



PIN No.	Name	Signal name	Remarks
1	-	GND	
2	-	DC IN	
3	-	GND(I/O)	
4	Line0	GPI[0]-	EIA-422
5		GPI[0]+	EIA-422+ / TTL
6	Line1	GPI[1]-	EIA-422-
7		GPI[1]+	EIA-422+ / TTL
8	Line2	GPI[2]	-
9	Line3	GPO[0]	Open collector output
10	Line4	GPO[1]	Open collector output
11	Line5	GPO[2]	Open collector output
12	Line6	GPO[3]	Open collector output

Reference

Wavelength
: 400nm~1700nm



Reference

Dimension (GigE)

