



# ZEISS Interlock Compact 2.4/25



## Features

- very compact but suitable to large image format
- for industrial cameras up to sensor sizes of 24x36 mm or 41mm line sensors
- precise manual focusing
- robust full-metal construction
- features special screws to fix focus and aperture settings even in rough situations
- due to light weight resistant against vibrations and shocks
- large angular field of 81°

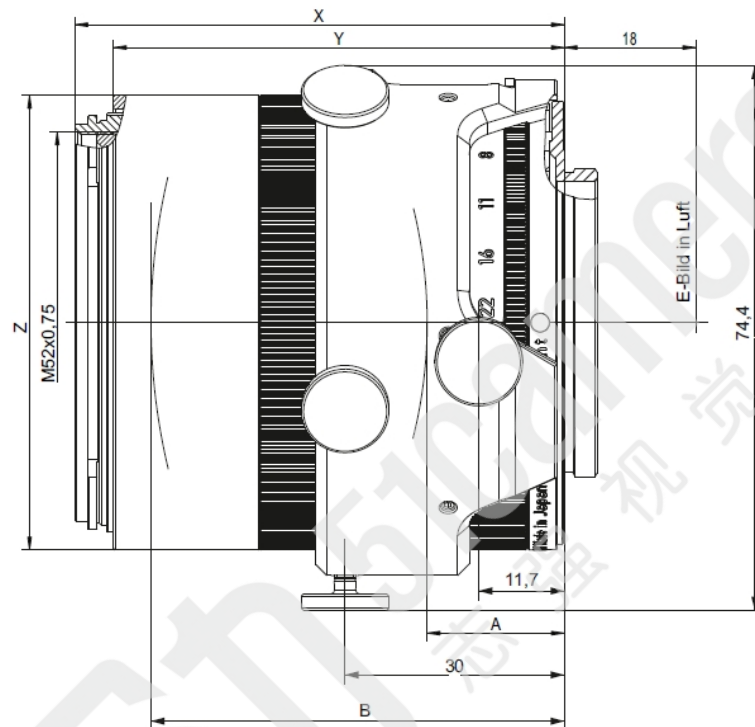
## Camera Mount

M42x1 screw mount  
(18 mm FFD)



# ZEISS Interlock Compact 2.4/25

## Technical Specifications



| X              | Y       | Z           | A              | B               |
|----------------|---------|-------------|----------------|-----------------|
| 69.2 mm (inf.) | 63.8 mm | Ø = 62.0 mm | 1.47 mm (inf.) | 65.39 mm (inf.) |

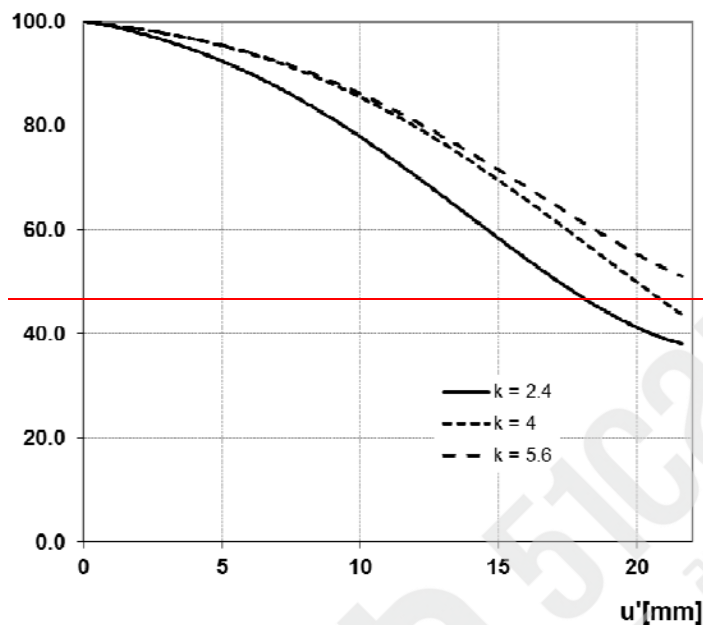
|  |  |
|--|--|
| Focal length                             | 25 mm  |
| Aperture range                           | f/2.4 – f/22                                   |
| Number of elements / groups              | 10 / 8   |
| Min. working distance (object to sensor) | 250 mm (0.82 ft.) – ∞                          |
| Min. free working distance               | 163 mm (0.54 ft.) – ∞                          |
| Angular field* (diag. / horiz. / vert.)  | 81 / 71 / 51°                                  |
| Max. diameter of image field             | 43.0 mm (1.7")                                 |
| Flange focal length                      | 18.0 mm (0.71")                                |
| Coverage at close range                  | 231 x 154 mm (9.1 x 6.1"), line 319 mm (12.5") |
| Image ratio at close range               | 1:6.4  |
| Filter-thread                            | M52 x 0.75                                     |
| Weight                                   | 474 g (1.0 lbs.)                               |
| Camera mount                             | M42 (18.0 mm FFD)                              |

\* referring to 24 x 36 mm format resp. 43 mm line



# ZEISS Interlock Compact 2.4/25

## Relative Illuminance\*

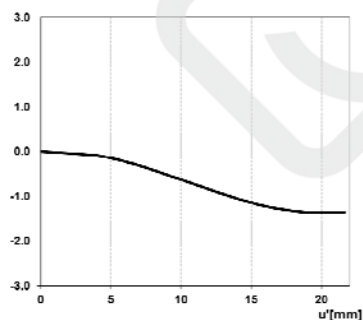


$E$  [%]

The relative illuminance shows the image brightness over the image height  $u'$  in relation to the image center.

- f-number = 2.4
- - f-number = 4
- · f-number = 5.6

## Relative Distortion\*



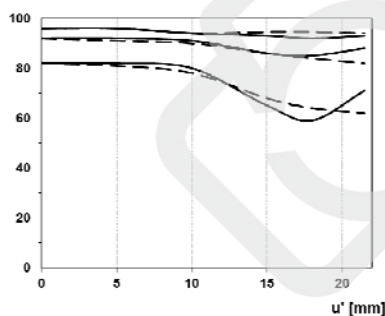
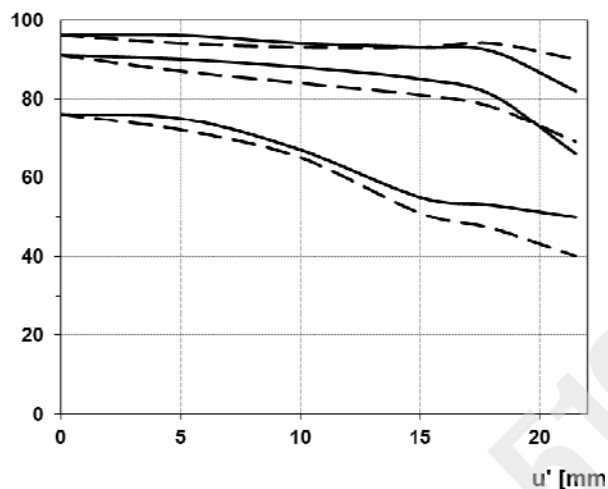
$V$  [%]

The relative distortion shows the deviation of the image height from the expected image height  $u'$  in percent



# ZEISS Interlock Compact 2.4/25

## MTF Charts\*

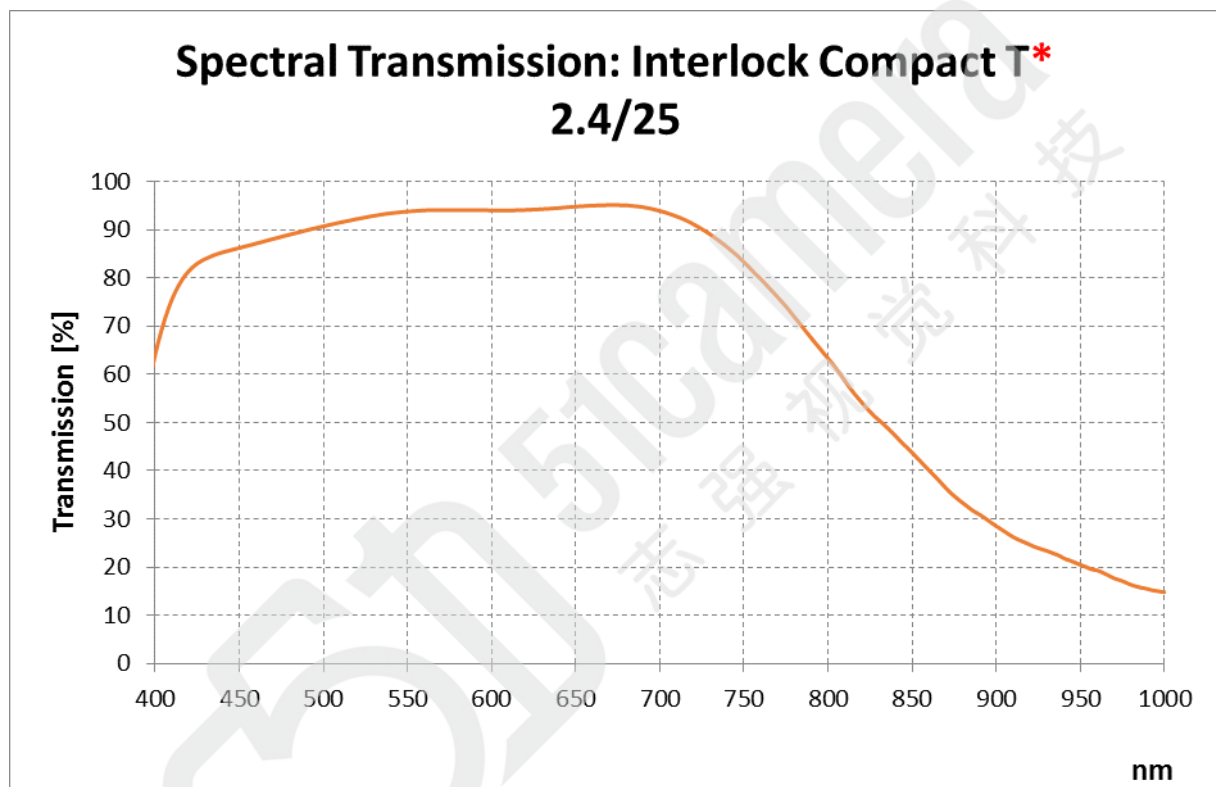


\*Data for infinite focus setting



# ZEISS Interlock Compact 2.4/25

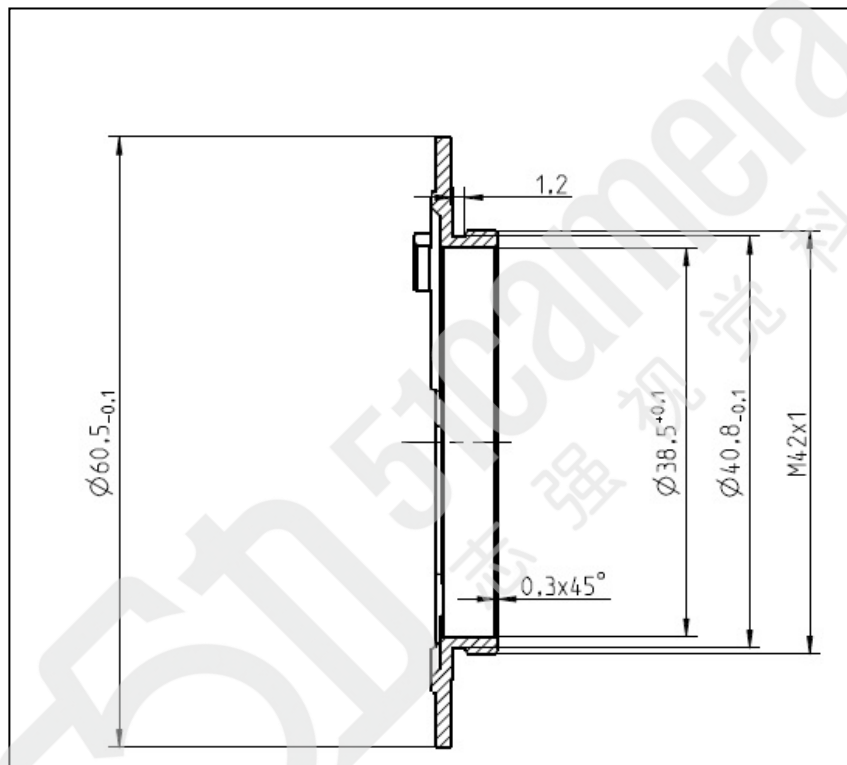
## Spectral Transmission





# ZEISS Interlock Compact 2.4/25

## Sketch of the M42x1 Interface (FFD 18.0 mm)



The diameter of the camera/lens adapter must not exceed 60 mm at the interface to the lens!